

# Corporate Headquarters for Lease

## ±70,000 s.f. available

Transal Corporate Park  
2750 NW 84 Avenue | Doral, Florida 33122



### Building specifications:

- ±70,000 s.f. available for lease situated on ±3.59 acres
- ±10,260 s.f. of office space
- 20 dock positions; 1 van height door; 1 concrete ramp
- ±22' clear ceiling height
- ±95 parking spaces
- 2017 occupancy
- Close proximity to Palmetto Expressway (SR-826), Dolphin Expressway (SR-836), and Florida Turnpike Extension
- Institutionally owned and professionally managed



For further information, please contact our exclusive agents:

Steve Medwin, SIOR, CCIM      T. 305.350.0923  
Nick Wigoda, SIOR              T. 305.982.4110

steve.medwin@ngkf.com  
nick.wigoda@ngkf.com



1111 Brickell Avenue, Suite 2000, Miami, Florida 33131

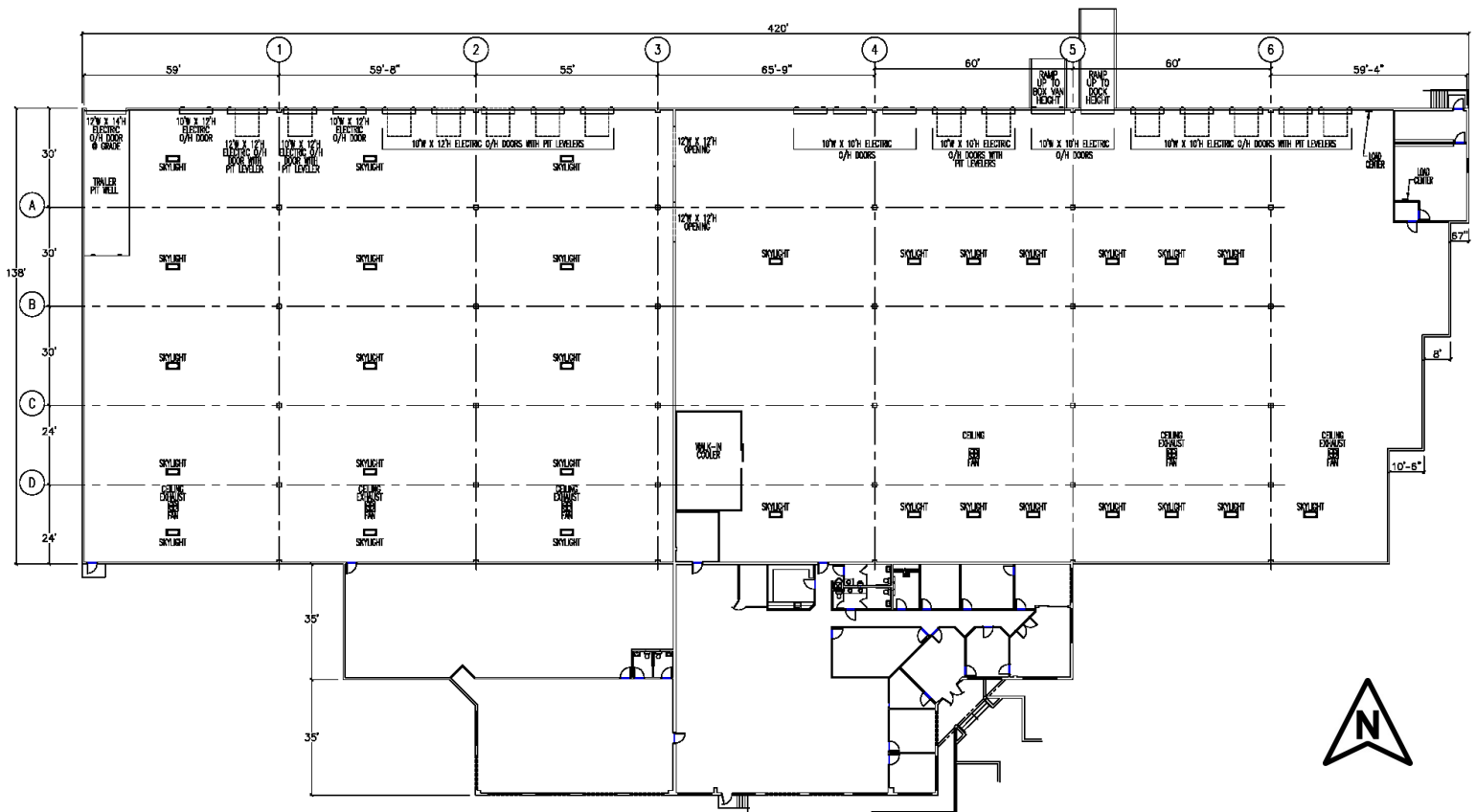
www.ngkf.com

# Corporate Headquarters for Lease

## ±70,000 s.f. available

Transal Corporate Park  
2750 NW 84 Avenue | Doral, Florida 33122

### Building plan



For further information, please contact our exclusive agents:

Steve Medwin, SIOR, CCIM T. 305.350.0923  
Nick Wigoda, SIOR T. 305.982.4110

steve.medwin@ngkf.com  
nick.wigoda@ngkf.com



1111 Brickell Avenue, Suite 2000, Miami, Florida 33131

www.ngkf.com